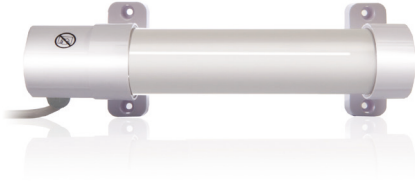


# Sahara

## Tubular Heater

1, 2, 3 and 4ft



p.126

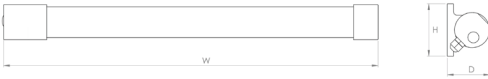
### Usage

Ideal for heating a small space or area that needs to be protected from frost, tubular heaters can be used in a number of settings such as green houses, conservatories, workshops and caravans for frost protection.

### Features and Benefits

- Energy efficient heater providing frost protection
- Helps reduce condensation and damp
- IP55 waterproof
- Robust end fixing brackets (no flimsy plastic clips)
- Available in 1, 2, 3 and 4ft
- Guards are available for all sizes
- Quick and easy installation
- Easy to use
- Internal thermostat

Product Code	Size (ft)	Power (W)	Current (amps)
TH01B	1	45	0.2
TH02B	2	80	0.4
TH03B	3	135	0.6
TH04B	4	180	0.8

**Outer Casing**

White coated steel tube, white plastic end caps and brackets.

**Controls**

None

**Safety**

Overheat temperature protection.

**IP Rating**

IP55

**Installation**

Wall or floor mounting kit included and must be used.

**Electrical Connection**

Supplied with a pre-wired (1.3m) white cable BS plug, cable entry to the left of the unit.

Class I

**Approvals**

CE, UKCA

**Standard Warranty**

1 year parts or replacement warranty.

Product Code	Height (mm)	Width (mm)	Depth (mm)	Weight (kg)
TH01B	90	305	90	1
TH02B	90	610	90	1.5
TH03B	90	915	90	2
TH04B	90	1222	90	2.5